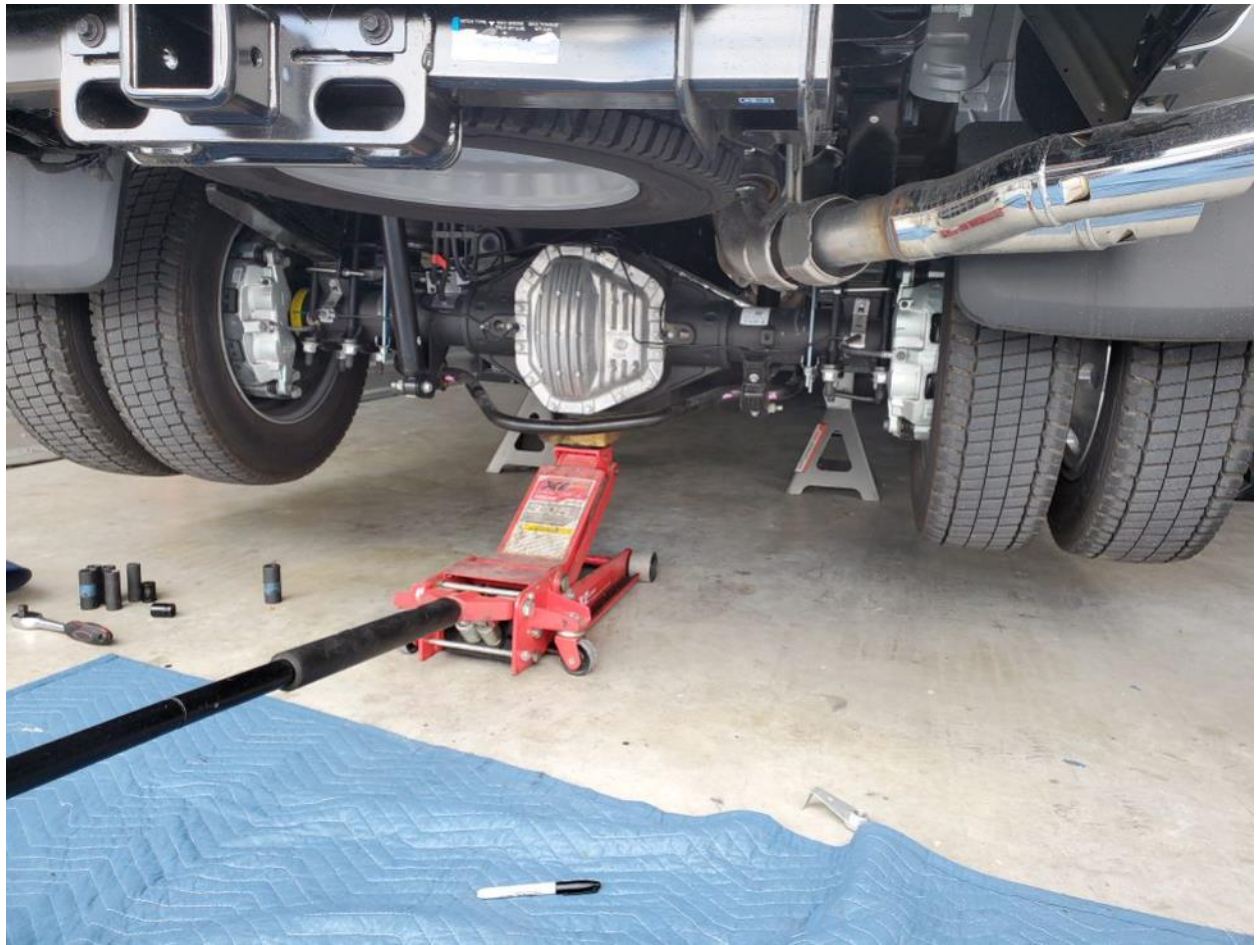


Following photos are for installation reference.



OEM shackle to be removed



Lifting the vehicle to position the jack stands



Shock absorbers removed from the bottom bolt.



In this case the truck has aftermarket air bags installed. The lower bracket was removed to allow the axle be drop down.



Remove the OEM shackle by removing the bottom bolt first on both sides of the truck (Driver and passenger) and then lift up the hydraulic jack until the leaf spring eye is next to the bed, remove the top bolt while holding the shackle and avoid being below the trajectory of the shackle to avoid an injury.

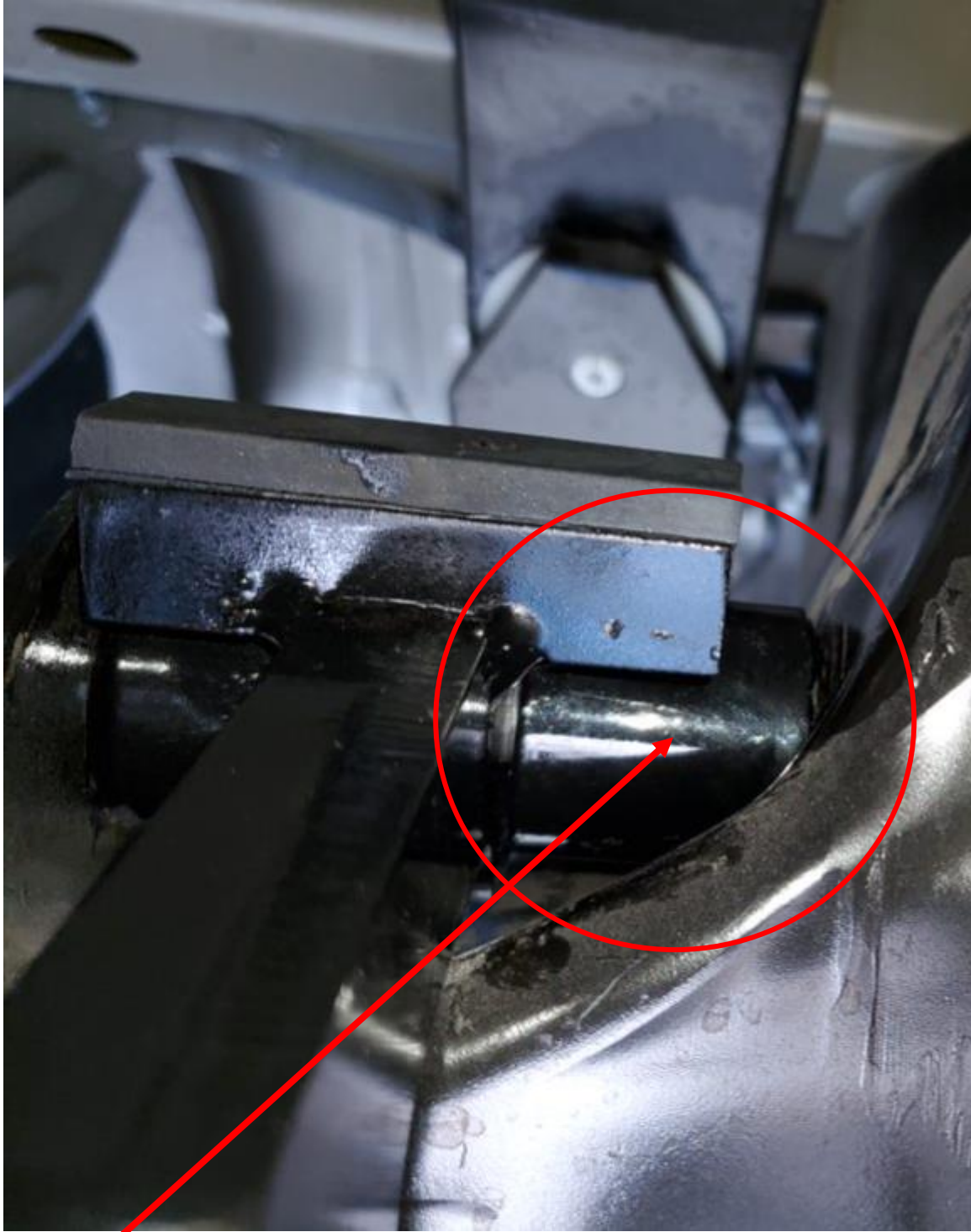


Remove the tall nut, washer and "half moon shaped washer from the Sulastic shackle.

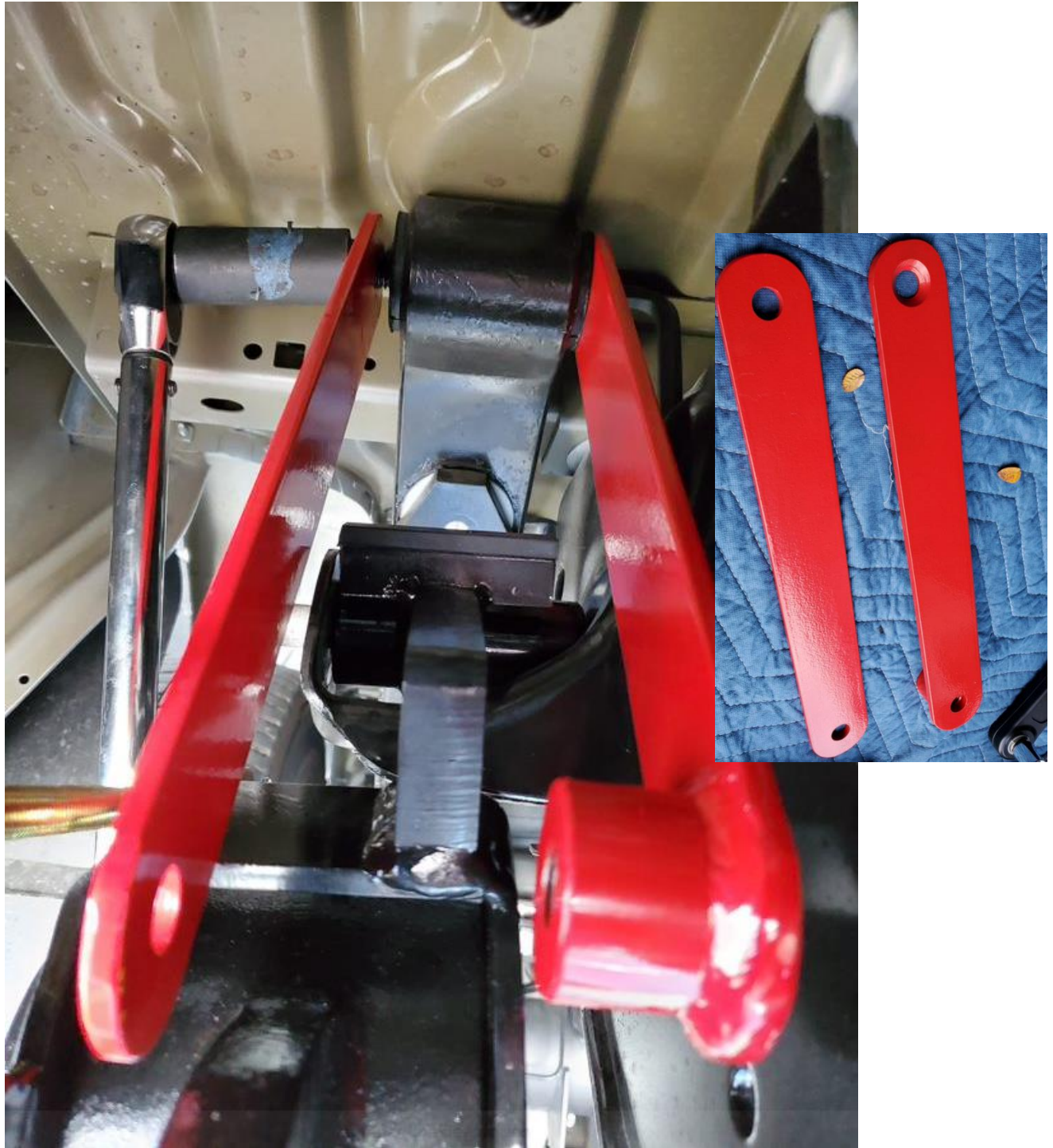
After removing the tension and the hardware from the Sulastic shackle, open the Sulastic shackle up to the maximum distance between bushing and the bracket holes, marked on the photo with the red arrow. Recommended to use a rubber head hammer to open the distance.



Position the Sulastic shackle on place, install the black spacer on the inside between the frame and the sulastic's shackle bushing and insert the OEM bolt.



The black spacer is installed on the inside of the truck, between the frame and the Sulastic's bushing.



Install the red brackets making sure to position the brackets on the correct position. The bracket with the spacer is located next to the frame and has a chamfer to allow the head of the bolt be flushed to the bracket. The conic head bolt must be inserted from the frame to the fender.

Sulastic

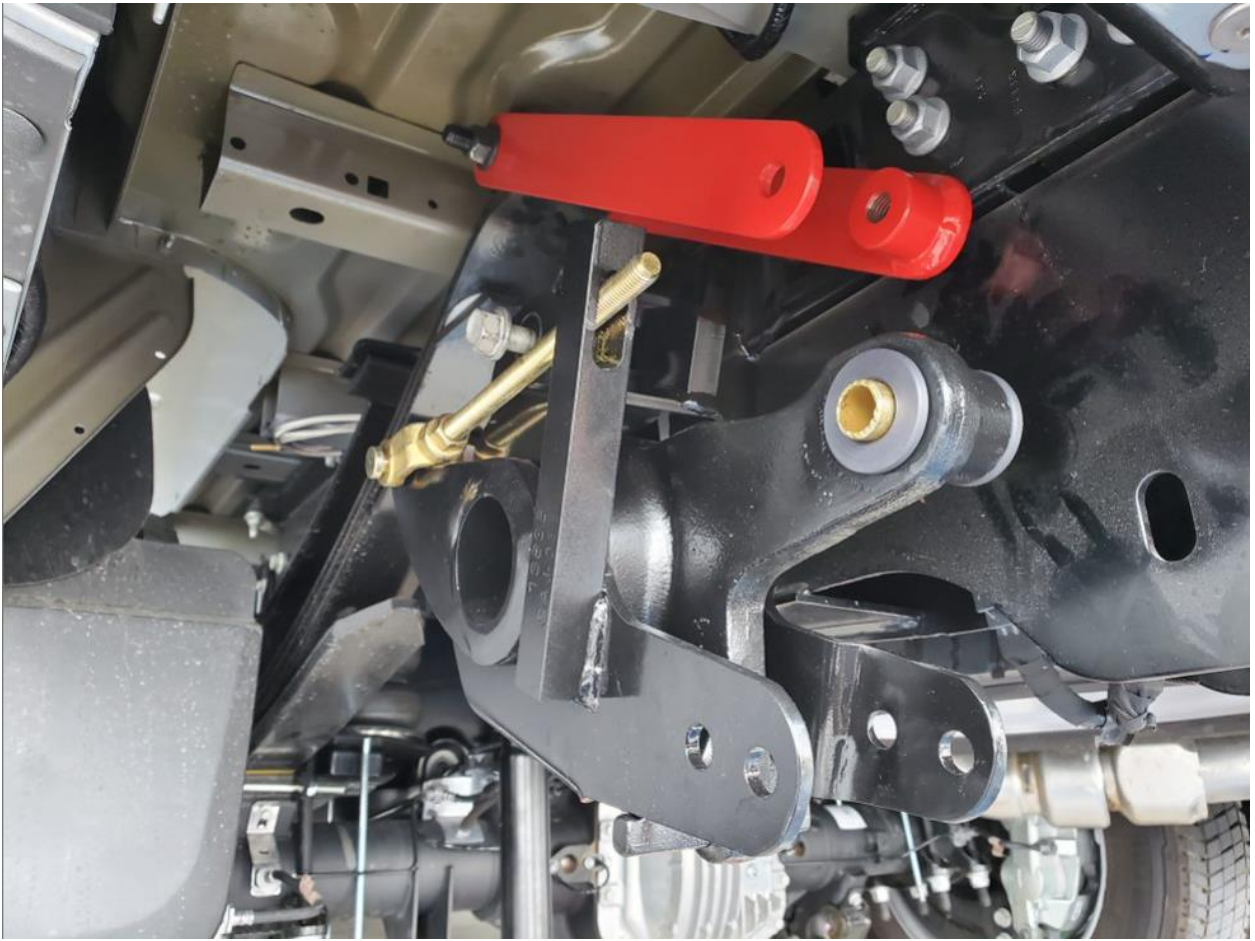
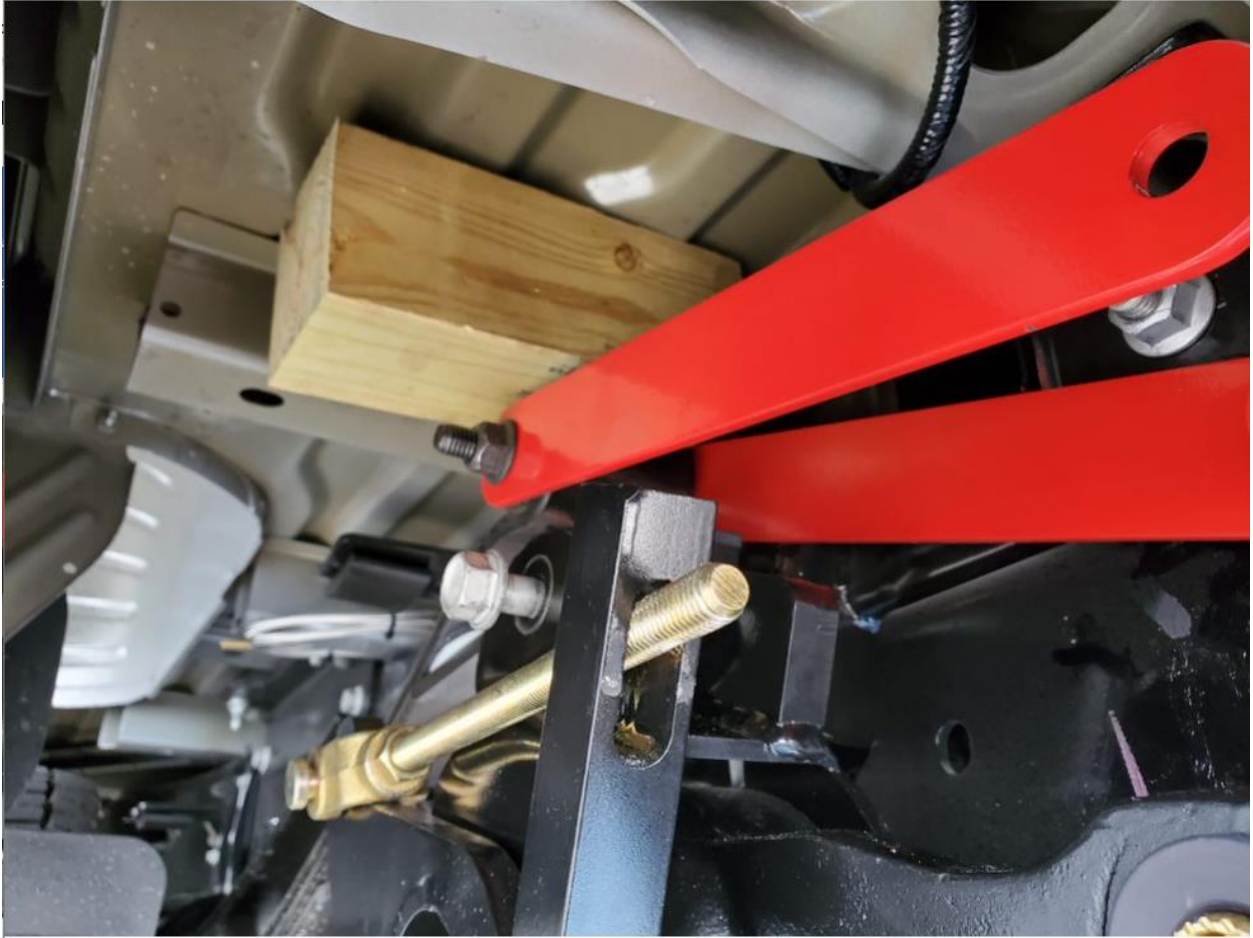


Photo for reference of how it looks.



Lower the hydraulic jack and position a 12" length 4x4 on top of the leaf spring eye and lift the hydraulic jack until it starts to touch the bed. Keep compressing the leaf spring by lifting the jack until the red brackets can be aligned to install the bolt that connects the Sulastic shackle to the red brackets.





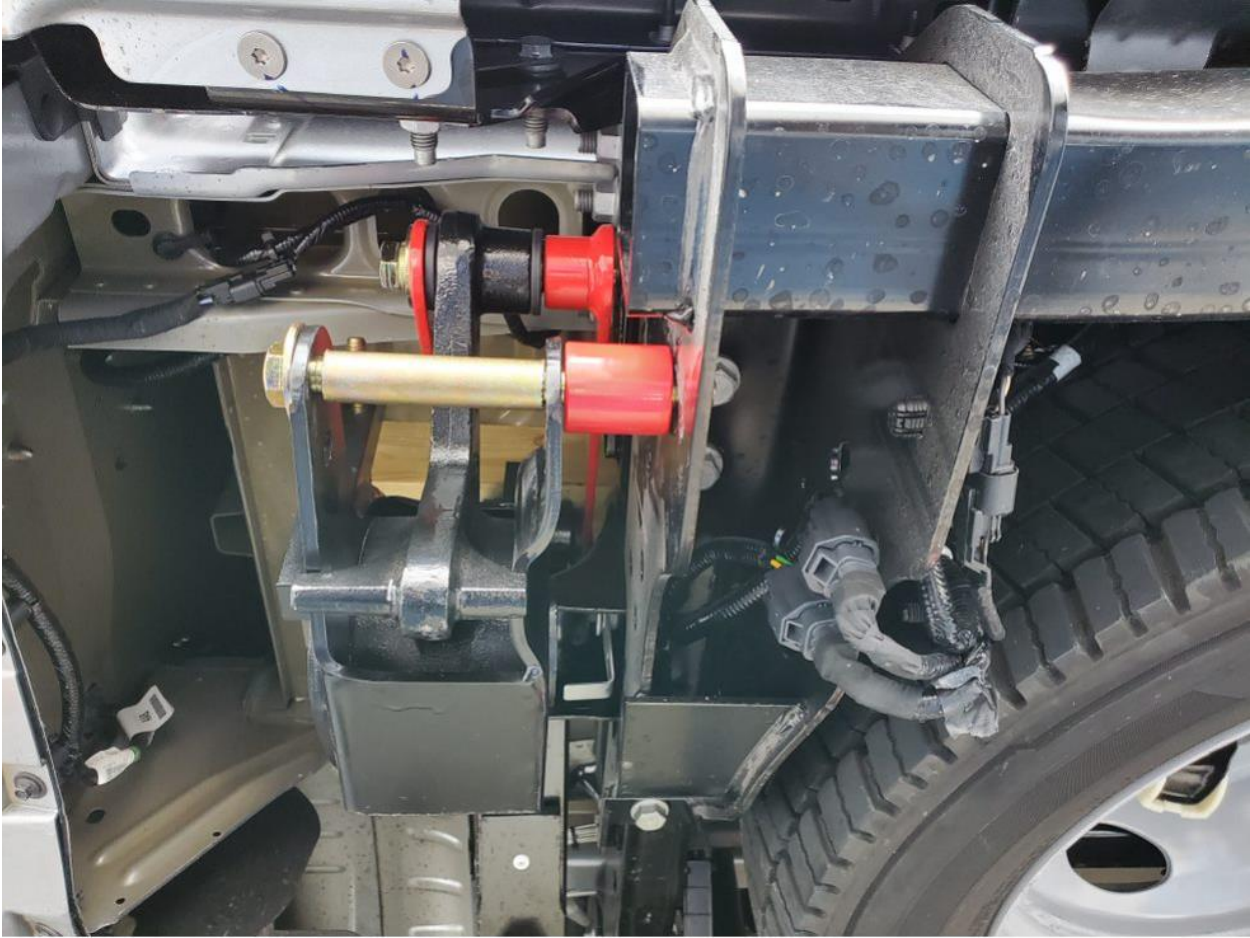
Install the bolt.

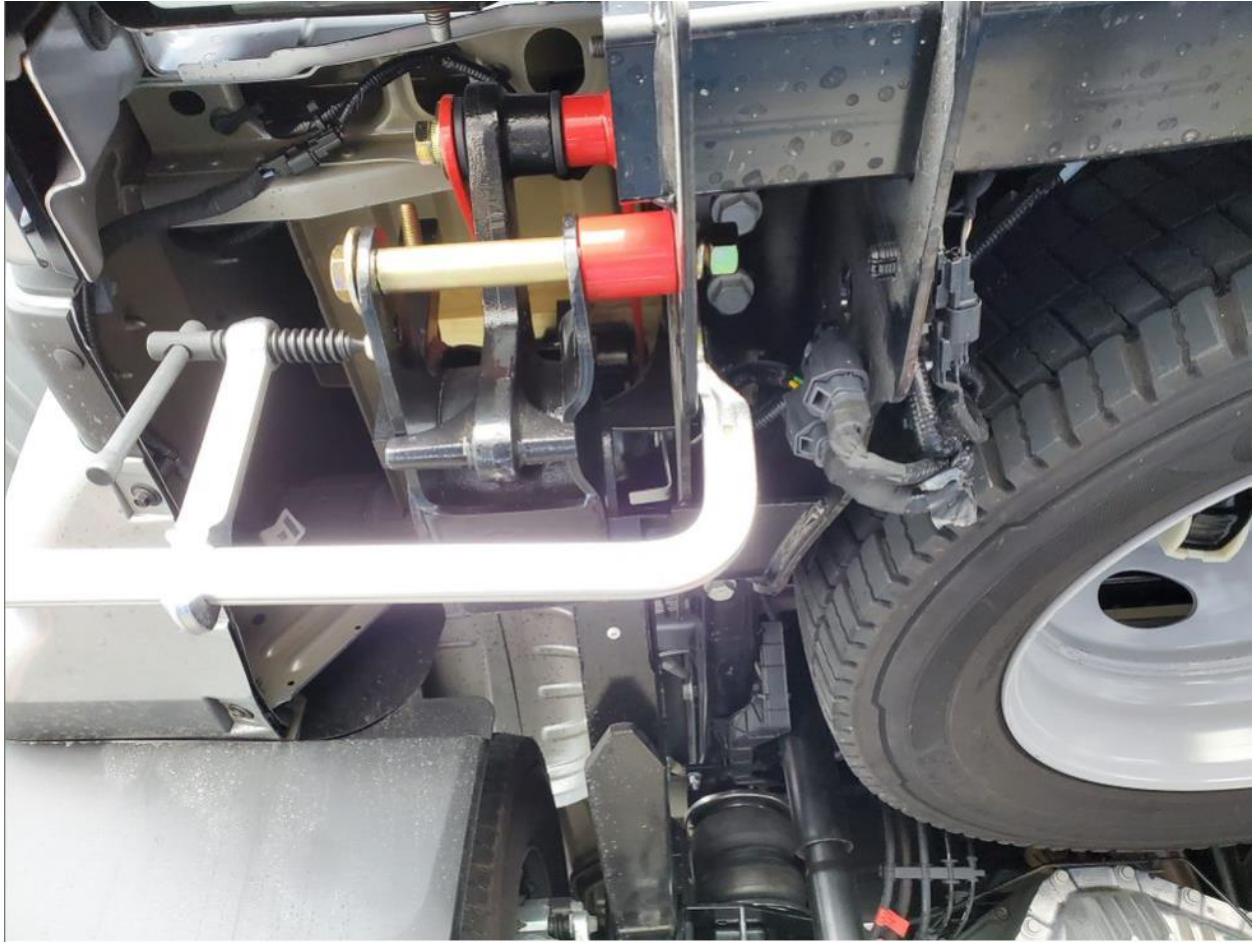




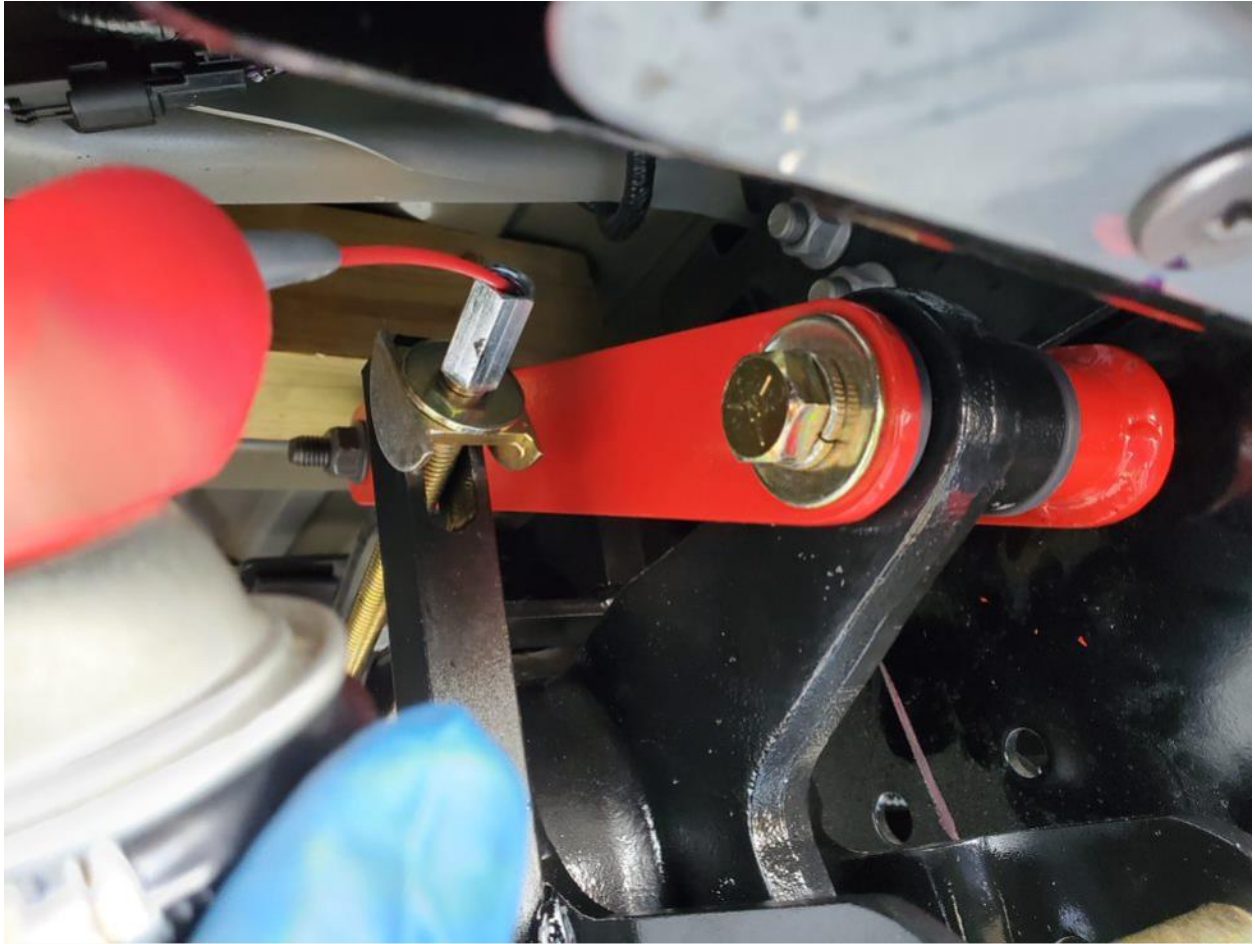
Align the Sulastic shackle brackets to the hitch hole and insert the bolt, remembering to install the bushing. See next photo showing the bushing.



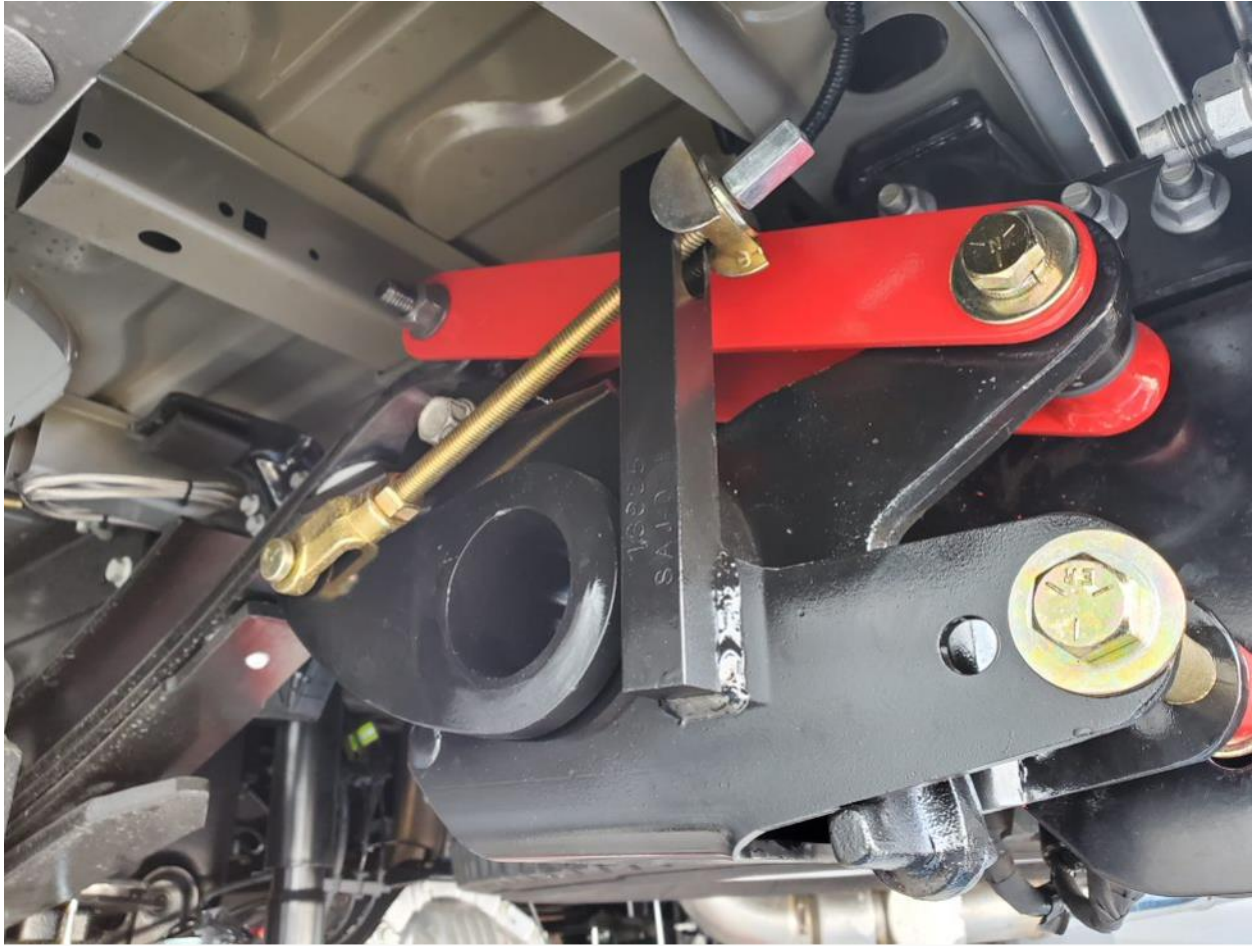




Use a press to help you to position the Sulastic shackle against the hitch receiver.



Assembly the half moon, washer and tall nut and apply some lubricant to make it easier to calibrate the Sulastic.



Sulastic photo.



Use a 5/8" wrench to turn the nut.



Turn the nut in until the $\frac{3}{4}$ " gauge (red square) fits between the "T" and the Sulastic shackle box.